

Activating your license and using QA C/C++ for the first time

To use this license for the first time you will need to use a FLEXlm license server (which can run locally on your machine).

Using a FLEXid ?

A FLEXid is a type of dongle that FLEXlm can use to identify a user or licence server. To use your FLEXid you must first download the FLEXid device driver and then follow the steps below. The device driver can be found here :

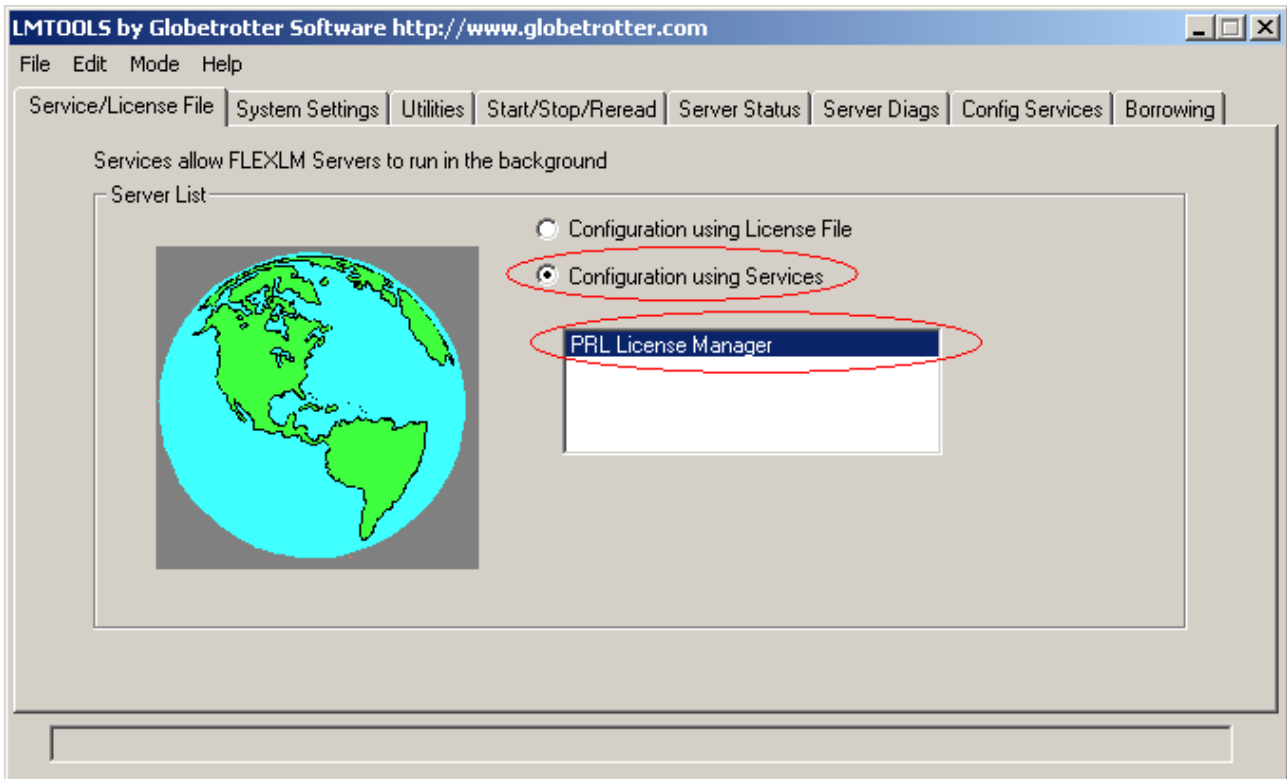
<http://www.programmingresearch.com/downloads/Windows/FLEXlm/FLEXidInstaller.exe>

Configuring FLEXlm

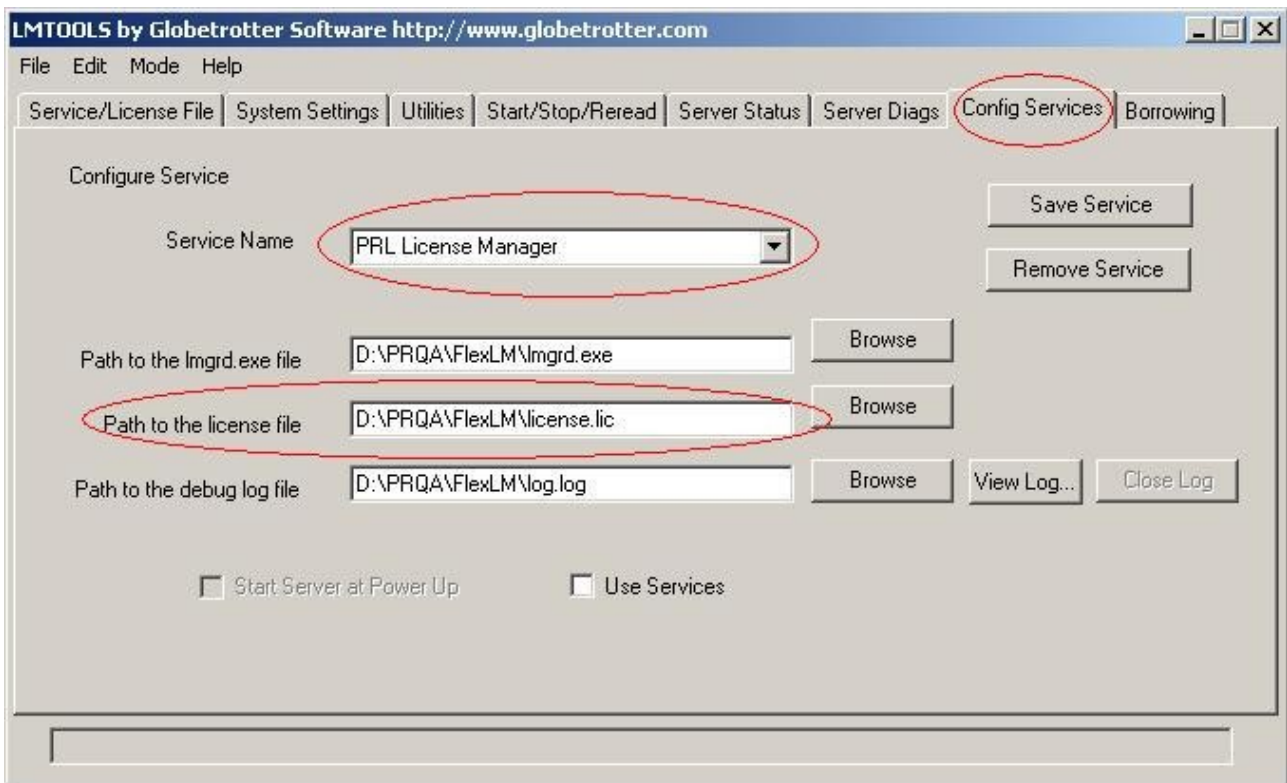
You should have access to FLEXlm license management tools. If these have not already been provided for you, They can be downloaded from the following location.

<http://www.programmingresearch.com/downloads/Windows/FLEXlm/licTools-9.5-Win.zip>

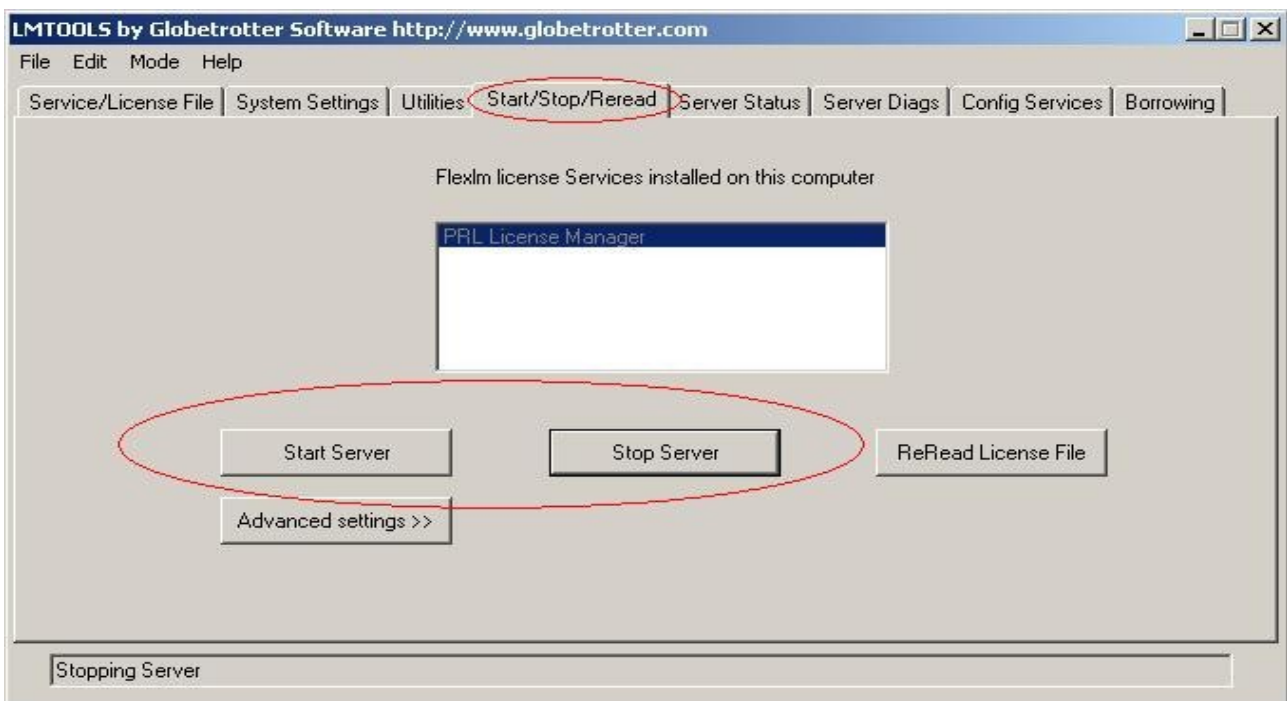
- Unpack the FLEXlm tools in a convenient location on your license server machine.
- Run lmtools.exe from your FLEXlm folder.
- Ensure the Service/License File tab is selected.
- Select Configuration using Services and highlight the PRL License Manager. The PRL License Manager may not be listed. This service can be added in the next step.



- Click on the Config Services tab.
- Select the PRL License Manager Service. If this service is not listed, type in "PRL License Manager".
- Browse to the location of the license file and specify a location for the log file.
- To have the license manager restart when the machine is restarted select the Use Services and Start Server at Power Up check boxes.
- Click on Save Service.



- Stop and restart the license server.



- Start QA C / QA C++
- Open the example project and analyse.

The first time you start QA C/C++ it will ask you to specify a license server or license file. Select Specify the License Server.



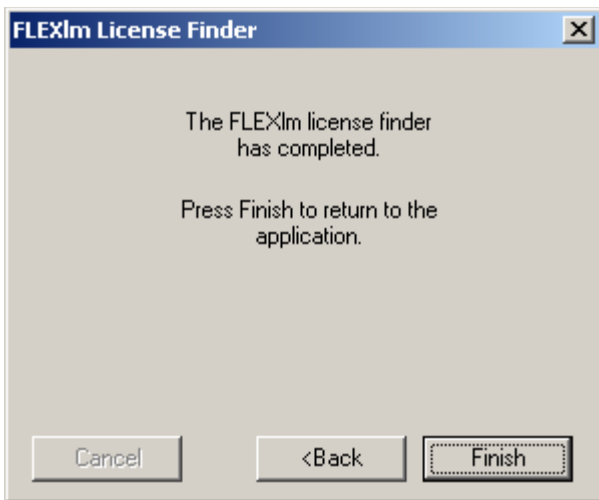
Next you will need to specify the name of the license server alternatively you can specify the IP address of the license server.



To find the name of the license server right click on the My Computer icon and select Properties. Click on the Network Identification tab. The name of the computer will be there.

To find the IP address start a command shell and type ipconfig at the command prompt. The IP address will be listed in the form <number>.<number>.<number>.<number>.

After FLEXlm has located your license server you will see the following message.



NOTE: If you are installing QAC/C++ on a laptop and wish to be able to use it when you are not attached to your local network, you will need to ensure that you are running the license server on your laptop.

Your license File Explained

FLEXlm operates with an encrypted, readable text licence file in all cases. There are several components to this licence file, as provided by PRL:

```
SERVER this_host 8312e512
```

This line describes the server machine that the license will run from. It could also be a client machine that serves licenses to itself.

```
VENDOR prflexd
```

This line describes the vendor for this license, which will always be PRL's unique identifier.

```
USE_SERVER
```

This line mandates that all licenses must be delivered from a server, rather than operating as a standalone node-locked license.

```
FEATURE QAC prflexd 6.0 permanent 3 PLATFORMS=i86_n DUP_GROUP=UHD  
\ ISSUED=22-Jul-2003 SIGN="02EC 1189 ..."
```

This line describes one of the 5-6 features that collaborate into a single user license. The key components of this line have the following meaning:

Element	Explanation
QAC	The product identifier (for QAC++, the identifier is QACPP).
6.0	The version of product up to which this license is permitted to run.
Permanent	Indicates a permanent, as opposed to temporary, license (for a temporary license, a license end-date would be here).
3	The number of concurrent users permitted.
PLATFORMS=i86_n	Platform range permitted for client access, in this case Windows only.

Note: There is a descriptive text line in each license file that describes the above key information.

```
INCREMENT QAC prflexd 6.0 permanent 3 PLATFORMS=i86_n
DUP_GROUP=UHD \
    ISSUED=22-Jul-2003 SIGN="02EC 1189 ..."
```

This line is an alternative format of the set of feature lines, where additional licenses are being added to an existing feature. This might often be the case when a customer has added licenses to an existing set-up.